

WR2 Wireless Sensor

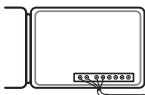
Quick Reference Guide Guía de referencia rápida



DO NOT insert battery cassette into Sensor until Controller Interface is powered up and you are ready to "pair" the units.
NO introduzca el compartimento de la pila en el sensor hasta que la interfaz del control WR2 esté encendida y usted esté preparado para sincronizar ambas unidades.

1 Controller Interface - Mounting

Interfaz del control WR2 : montaje



Cable length
30" (76.2 cm)
Longitud del cable:
76,2 cm (30")



2 Controller Interface - Wiring

Interfaz del control WR2: cableado



RED ROJO - 24VAC 24VCA

BLACK NEGRO - 24VAC 24VCA

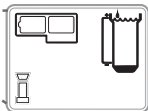
WHITE BLANCO - Sensor Input (or Common) Entrada del sensor (o común)

GREEN VERDE - Sensor Input (or "Field") Entrada del sensor (o "Campo")



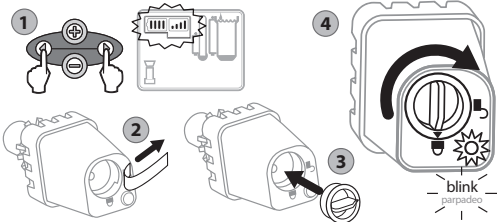
3 Controller Interface - Initial Power Up

Interfaz del control WR2: puesta en marcha inicial



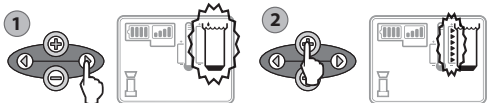
4 Pair Controller Interface & Sensor

Sincronización del sensor y la interfaz del control WR2

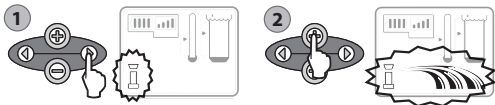


5 Programming Set Points

Programación de los niveles preestablecidos



6 Programming Irrigation Modes
Programación de los modos de riego



7 Save Contractor Default Setting
Guardar los valores predeterminados por el instalador

Save
Guardar

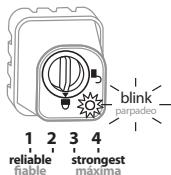
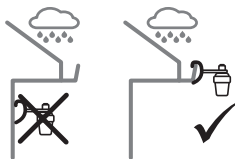


Reset Restablecer

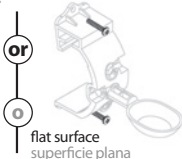
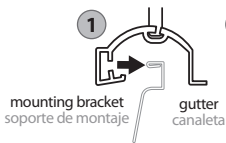
Review Revisar **5** & **7**

8 Sensor - Mounting Location
Sensor: lugar de montaje

Signal Strength
Intensidad de la señal



9 Sensor - Mounting Instructions
Sensor: instrucciones para el montaje

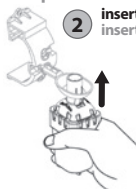


Insert the Sensor into the bracket
Inserción del sensor en el soporte

1 remove cap
retirar la tapa



2 insert
insertar



3 replace cap
volver a
colocar la
tapa

