

## For Light Commercial and Residential Applications

Job Name \_\_\_\_\_

Contractor \_\_\_\_\_

Job Location \_\_\_\_\_

Approval \_\_\_\_\_

Engineer \_\_\_\_\_

Contractor's P.O. No. \_\_\_\_\_

Approval \_\_\_\_\_

Representative \_\_\_\_\_

# Series 7R-AUS

## Dual Check Valves

### 7R-AUS Sizes: 15-50mm

Series 7R Dual Check Valves are designed for low-health hazard residential water system containment, protecting against backflow and back siphonage and in continuous pressure applications. Application example would include drinking water supply service entrances or individual outlets. The Series 7R-AUS uses two compact replaceable check modules and can be installed in conjunction with a water meter.

### Features:

- High quality components for long life performance.
- Individually factory tested.
- Solid compact construction.
- Can be installed vertically and horizontally.

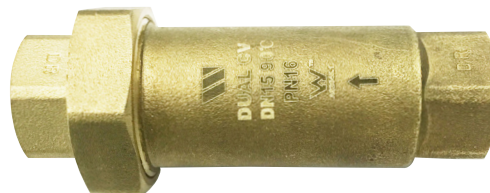
### Specifications:

The Dual Check backflow preventer shall meet the requirements of AS2845.1. It shall be of DR brass bodied and include not less than one union. An identification tag indicating direction of flow shall be securely attached to the valve body. The Dual Check shall comply with all National and State codes where applicable. The Dual Check shall be a Watts 7R-AUS. (Please select the model best suited to the application).



WMK25866

WaterMark



7R-AUS

### Pressure – Temperature:

Temperature Range: 0.5C – 82C

Maximum Working Pressure: 12.07 Bar

Minimum Working Pressure: 0.35 Bar

### Series 7R-AUS:

The Inlet & Outlet connections are all of BSP Female Thread and match to each devices nominal DN size.

### Materials:

- Body: DR brass
- Check Modules: Engineered composite
- Discs: Santoprene
- Seals: EPDM
- Springs: Stainless steel

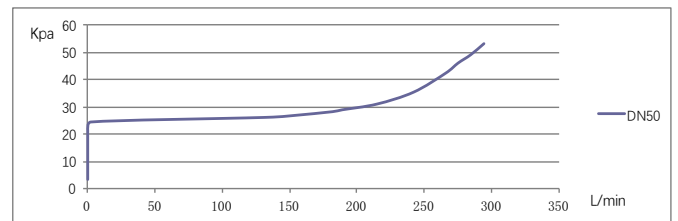
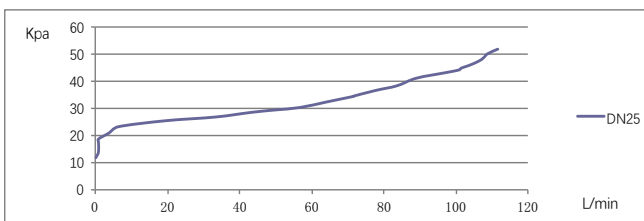
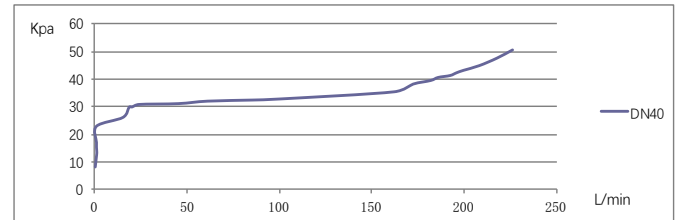
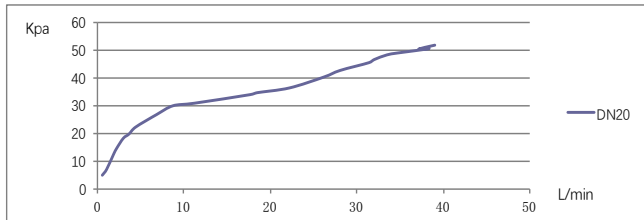
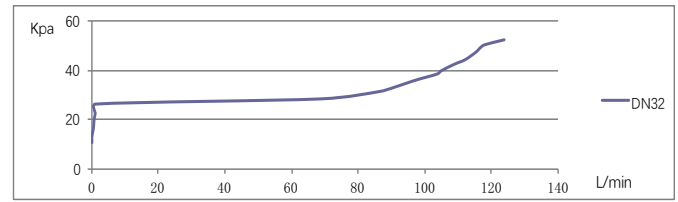
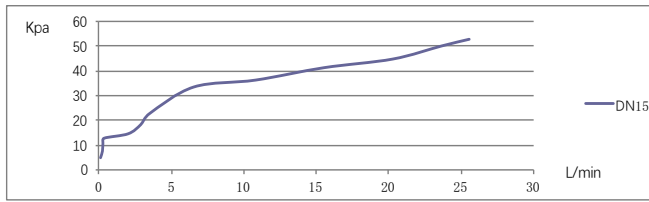
### Installation:

Dual Checks must be installed in compliance to AS3500.1 or applicable local codes and by a qualified plumber. Installation can be vertical or horizontal. Do not locate underground. Make sure all lines are cleaned of any debris before commissioning.

Watts product specifications in U.S. customary units and metric are approximate and are provided for reference only. For precise measurements, please contact Watts Technical Service. Watts reserves the right to change or modify product design, construction, specifications, or materials without prior notice and without incurring any obligation to make such changes and modifications on Watts products previously or subsequently sold.

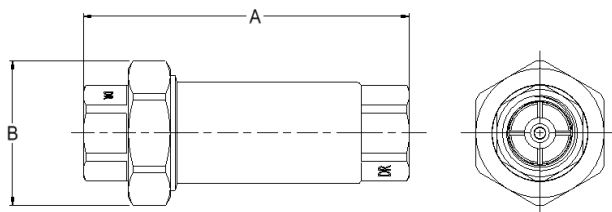


## Capacity Head Loss versus Flow



## Dimensions - Weight

7R-AUS



EDP	MODEL	SIZE (DN)	DIMENSIONS		WEIGHT (KG)	BOX		CARTON	
			A	B		SIZE (MM)	QTY	SIZE (MM)	QTY
61991040	1/2"x1/2" 7R-AUS	1/2"(DN15)	95	41.5	0.24	44x42x100	1	312X312X169	54
61991041	3/4"x3/4" 7R-AUS	3/4"(DN20)	96	42.5	0.28				
61991042	1"x1" 7R-AUS	1"(DN25)	110	51.5	0.33	53x52x115	1	289x289x272	50
61991043	1 1/4"x1 1/4" 7R-AUS	1 1/4"(DN32)	163.2	65.5	1.06	67x63x165	1	303X292X182	16
61991044	1 1/2"x1 1/2" 7R-AUS	1 1/2"(DN40)	183	94	1.9	100x92x195	1	355X350X232	9
61991045	2"x2" 7R-AUS	2"(DN50)	178	94	1.9				



USA: Tel: (978) 689-6066 • Fax: (978) 975-8350 • Watts.com  
Canada: Tel: (905) 332-4090 • Fax: (905) 332-7068 • Watts.ca